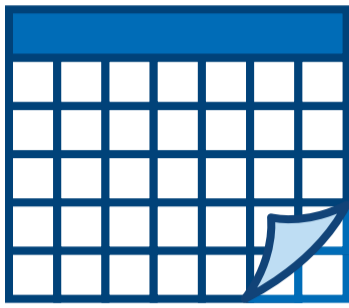
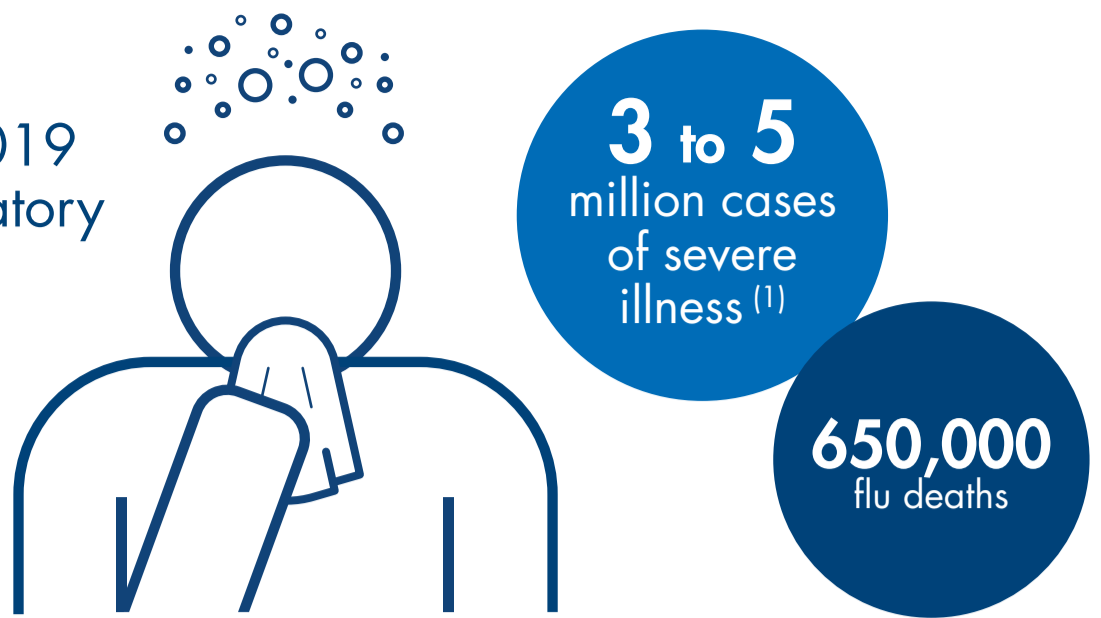
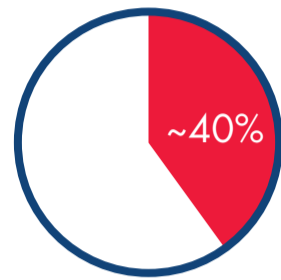


The 2018–2019 global respiratory season

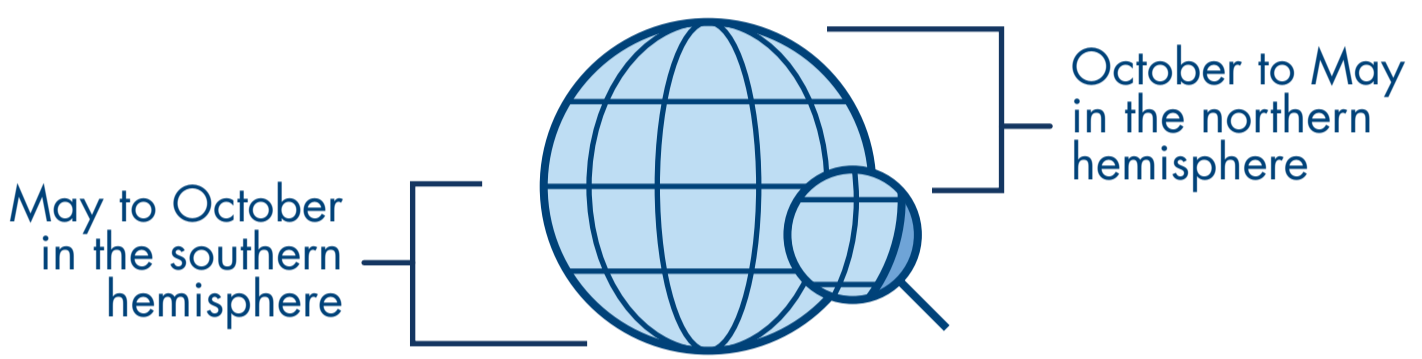


The 2018–2019 flu season was moderately severe, but the **21-week season** was the longest in 10 years ⁽²⁾

Flu season isn't just about the flu. Influenza only causes 35–45% of **influenza like illness (ILI)** cases during peak seasons ⁽³⁾



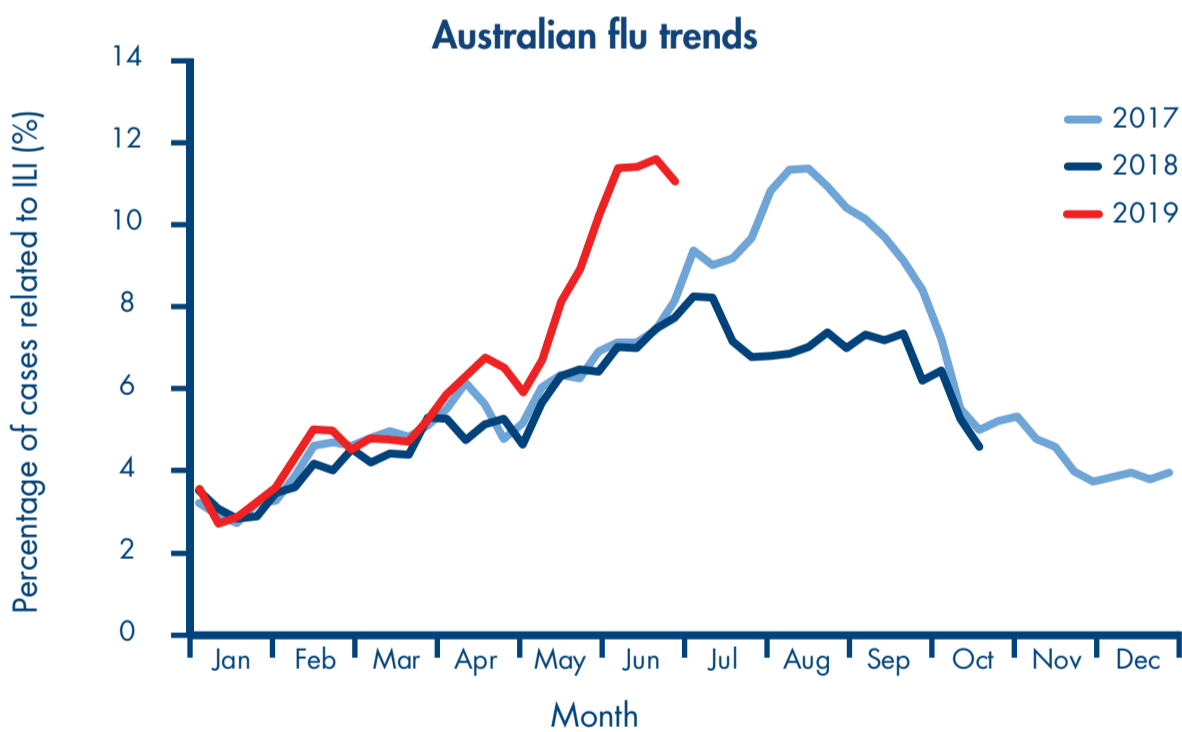
The flu season by hemisphere ⁽⁴⁾



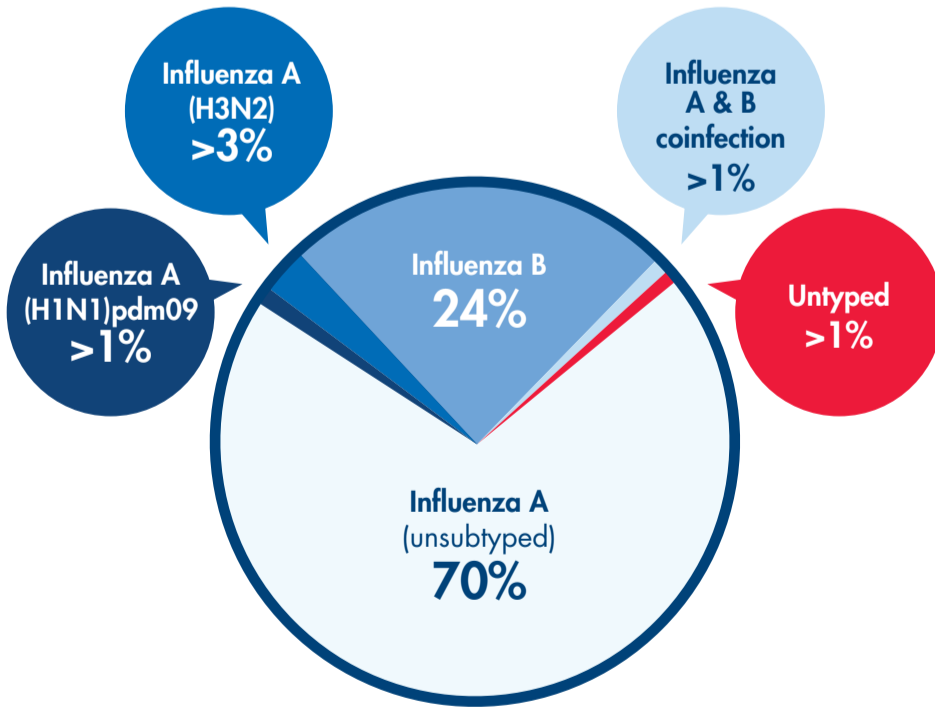
Respiratory season in the **northern hemisphere may mirror the southern.** A **significant potential exists** for using surveillance from the southern hemisphere to **monitor the flu season** in the northern hemisphere. ⁽⁵⁾

2019–2020 flu season outlook

Australian health officials are reporting **high flu activity** for this time of year ⁽⁶⁾.



Virus strains reported



The flu season is on the horizon. Let us help you prepare.

References:

1. World Health Organization Influenza (seasonal) [https://www.who.int/en/news-room/fact-sheets/detail/influenza-\(seasonal\)](https://www.who.int/en/news-room/fact-sheets/detail/influenza-(seasonal))
2. Centers for Disease Control and Prevention: Influenza Activity in the United States During the 2019–20 Influenza Vaccine. https://www.cdc.gov/mmwr/volumes/68/wr/mm6824a3.htm?s_cid=mm6824a3_w
3. Stelrecht, K.A. (2017) Molecular Testing for Respiratory Viruses. Coleman, W.B., Tsongalis G.J., eds. Diagnostic Molecular Pathology. Academic Press, p 123-37.
4. Russell, C. A. et al. (2008) Influenza vaccine strain selection and recent studies on the global migration of seasonal influenza viruses. Vaccine 26, D31–D34.
5. Zhang, Y., Yakob, L., Bonsall, M.B., Hu, W. (2019) Predicting seasonal influenza epidemics using cross-hemisphere influenza surveillance data and local internet query data. Scientific Reports 9, 3262.
6. Australian Government Department of Health. (2019) Australian Influenza Surveillance Report. Number 5, June 17–30.

PROM-15046-001 09/2019 © 2019 QIAGEN, all rights reserved. Trademarks: QIAGEN®, Sample to Insight® (QIAGEN Group).